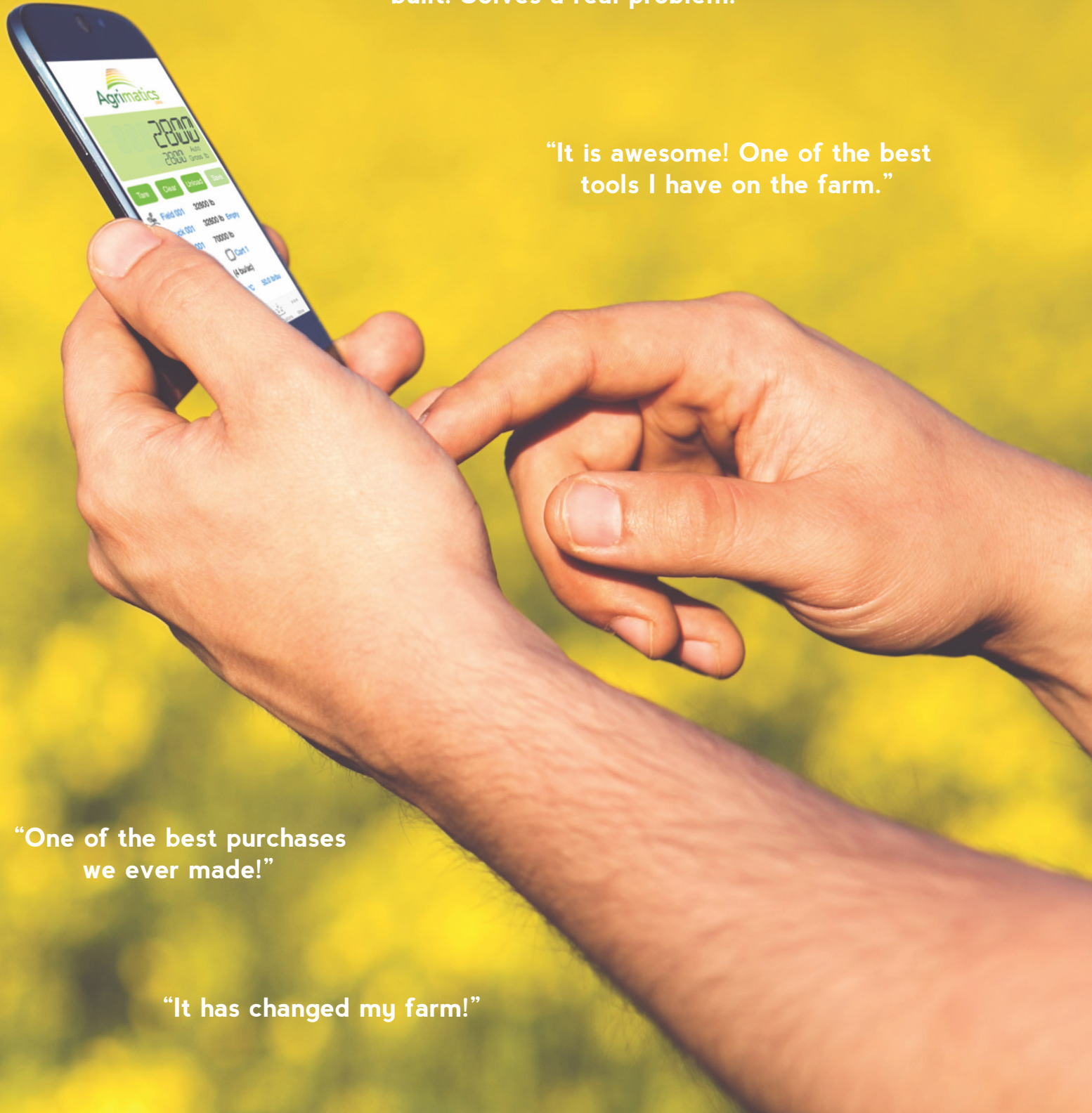


"It works flawlessly! It's truly an amazing product."

"It's made harvest life much, much easier. Worth every penny."

"Impressed with the product that Agrimatics has built. Solves a real problem."

"It is awesome! One of the best tools I have on the farm."



"One of the best purchases we ever made!"

"It has changed my farm!"



www.agrimatics.com

1-888-241-7216

400-15 Innovation Blvd.
Saskatoon, Saskatchewan, Canada
S7N 2X8



Libra CART



Revolutionary Grain Cart
Weighing and Data Management

Libra CART

Libra Cart is a powerfully simple grain cart weighing and data management system. Libra's patent pending technology automatically detects how much grain has been harvested, and allows remote users to view grain cart data on their smartphone, tablet, or computer.

HARDWARE FEATURES



Easy to Install

Mounts directly to the grain cart and easily connects to any industry-standard load cells

Wireless

No cables between the tractor and grain cart

Battery-operated

Energy-efficient and outlasts the harvest season for most farms on a single battery

Instant Access to New Features

New app features and firmware updates can be done right from the mobile device

Rugged Performance

Designed for the agricultural environment - hot, cold, rain, rough terrain

The Libra app displays harvest data on a tablet or smartphone, replacing traditional indicators, freeing up valuable cab space.

Compatible with all iPads (starting with 3rd gen), all iPhones (starting with 4S), and select Android devices running versions 4.3 or newer with Bluetooth Smart support.



APP FEATURES

Automatic Unload Detection

Detects every unload and saves:

- weight, date, time, GPS location*
- field, crop, destination (bins, bags, contracts, etc.)
- moisture, temperature, test weight
- operator name, notes

*if mobile device supports GPS

Unlimited Remote Displays

View and tare live weights from phones within range of the grain cart, simplifying yield monitor calibration

Display Smoothing

Stabilizes weights when driving over rough terrain

Records Offline

Automatically collects and saves harvest data whether or not the mobile device is connected to the Internet

Data Sharing

Share data through email and open with standard spreadsheet software or automatically through the Agrimatics Aero cloud service

Agrimatics
AERO

Optional Cloud Service



AERO BASIC (FREE)

- ✓ Automatically back up data to the cloud*
- ✓ Recover data in the case of a lost or damaged mobile device
- ✓ View data from the Aero desktop web application

AERO PRO (\$99 USD ANNUALLY/MOBILE DEVICE)

- ✓ Includes all the features of Aero Basic
- ✓ Instantly* sync data across all mobile devices, allowing:
 - combine operators or truckers to choose the destination
 - managers to create or edit fields, trucks, destinations, etc.
 - merging of data from multiple grain carts running Libra Cart
 - real-time viewing of yields and totals
- ✓ Generate advanced reports
- ✓ View, edit, and manage data from mobile devices and the Aero desktop web application

*when an Internet connection is available

SIGN UP AT:
WWW.AGRIMATICS.COM
OR
CLOUD.AGRIMATICS.COM