

Material Handling

# Customer Solutions

**Brandt**



**CLARK**

**JLG**



**Bobcat**

**SELICK**

**DOOSAN**

# The Brandt Advantage

## More Uptime

Whether you need a part, or your equipment runs into trouble, Brandt is dedicated to keeping you up and running.

- Trained and certified technicians
- Rapid, on-site service available
- Remote diagnostic tests enable troubleshooting from afar and real-time solutions

## Increased Profitability

Lean on our team of experts to help you get the most out of your equipment, every day.

- Flexible financing and leasing options
- On-site maintenance support available
- Comprehensive Brandt inspection program dedicated to machine uptime
- Daily, weekly and monthly equipment rentals

## Enhanced Efficiency

We have the expertise, industry-leading equipment solutions, and resources to help boost your bottom line.

- One of the largest new and used Clark, Sellick, JLG and Bobcat equipment inventory in Western Canada
- More than 2,300 Equipment Operator Training and Train-the-Trainer courses available each year
- Up-to-date knowledge of today's working environments and equipment needs



**125 YEARS**  
technician experience



**\$3 MILLION**  
in-stock parts inventory

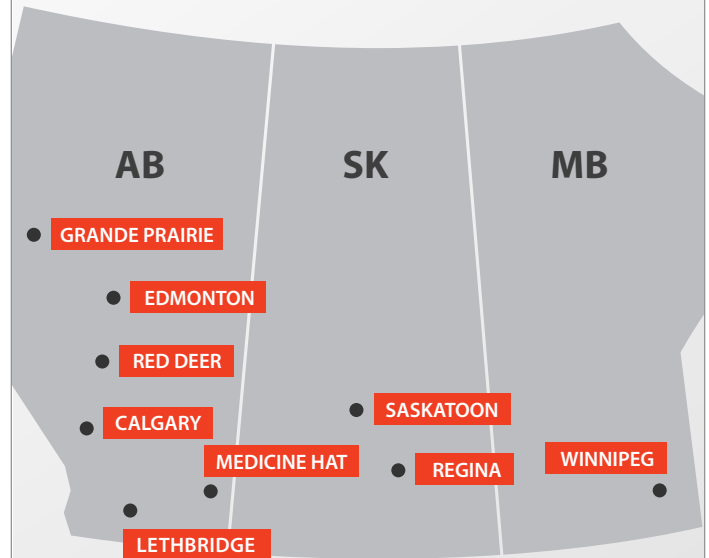


**3 PROVINCES**  
serving you

# Contents

- 4 Brandt Inspection
- 5 Service Solutions
- 5 Parts Solutions
- 5 Brandt Commitment
- 6 Equipment Planned Maintenance
- 8 Dock Planned Maintenance
- 9 Protection Plan
- 10 Operator Safety Training
- 15 Customer Service Advisors
- 16 Rental Solutions
- 18 Product Lineup
- 27 Attachments
- 27 Warehouse Equipment
- 28 Accessories
- 30 Safety
- 31 Storage Solutions

## BACKING YOU & YOUR EQUIPMENT



### Brandt Material Handling

#### Calgary

10121 Barlow Trail NE  
(403) 248-0018

#### Edmonton

10571-178 Street  
(780) 432-6262

#### Grande Prairie

7301-102 Street  
(780) 532-3414

#### Lethbridge

935A 36 Street North  
(403) 327-4611

#### Medicine Hat

1683 32 Street SW  
(403) 527-5563

#### Red Deer

101 Burnt Park Dr  
(403) 341-4091

#### Regina

Highway #1 East  
(306) 721-4608

#### Saskatoon

800 60 Street W,  
(306) 933-3383

#### Winnipeg

3700 McGillivray Blvd  
(204) 233-1611

[more.brandt.ca/forklifts](https://www.brandt.ca/forklifts)

# Brandt Inspection



Ensure your equipment meets safety standards and enhance productivity with a Brandt material handling equipment safety inspection. Receive a comprehensive safety review, complete with a machine health report from our manufacturer-certified service technicians.

## Including but not limited to:

- Brakes
- Air filters
- Forks and latches
- Battery condition
- Tires
- Greasing
- Safety systems
- Steering
- Fluid levels
- Alarms

## 3 reasons to choose an inspection:

- Save money by reducing unplanned downtime for repairs
- Routinely scheduled maintenance optimizes your machine performance for maximum productivity
- Protects your investment to retain resale value

Contact your local Brandt dealer for details.



## Service Solutions

We know how important fast response time and uptime are to you. That's why we offer rental options while your equipment is being serviced, as well as on-site mobile service where our technicians will come to you to complete service, repairs, and maintenance without the hassle of bringing the equipment to the shop.

### What we offer:

- Maintenance inspection services
- Emergency response for reduced downtime
- Technical expertise
- Fully equipped service trucks with cranes
- Service for all makes and models

## Parts Solutions

Our line of factory-approved parts sets the standard for superior performance. Brandt delivers the largest selection of Clark, JLG, Bobcat, and Sellick genuine parts. Our OEM parts are tested by engineers and help to maximize the resale value of your equipment. We also have access to parts for all makes and models, including Toyota, Hyster, Crown, Raymond, CAT, Linde, Nissan, Yale, and more.

As a leading material handling dealership in Western Canada, we have access to over 2.5 million parts in inventory to keep your machines up and running.

And, if you can't find what you need in-store, we can transfer parts from our locations across the country quickly, so you can get back to work faster.



## Our Genuine Service **COMMITMENT**

1. Customers will receive a written estimate.
2. Throughout the repair process, customers will receive frequent communication.
3. Additional required repairs and estimates will be authorized by the customer.
4. Brandt will continually advise all customers of estimated repair completion times throughout the repair process.
5. The final invoice will match the authorized estimate.



If the above commitment is not fulfilled, please see the local manager or visit us at [brandt.ca/feedback](http://brandt.ca/feedback)

# Equipment Planned Maintenance



## What Is Planned Maintenance?

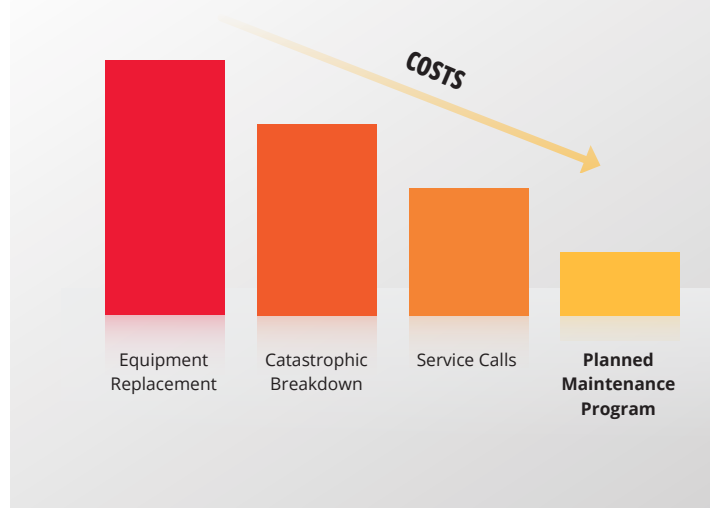
Planned Maintenance is built on lowering the cost of service and maintenance over the lifetime of your equipment. Planned maintenance services are a management tool that monitor each unit's condition and provide information on maintenance needs.

### Planned Maintenance Includes:

- Potential safety hazards
- Immediate service needs
- Future service needs
- Feedback on in-house maintenance activities
- Recommendations for improved performance
- Ensures warranty requirements are met
- Record-keeping supplies information on the total cost of operation
- 75- to 92-point machine health inspections
- Regularly scheduled service intervals
- All additional repairs will be quoted with price on parts and labour for your approval before work is done

# Benefits of Planned Maintenance

- Factory-trained technicians
- Comprehensive maintenance, per manufacturer recommendations
- Thorough review of machine report with our certified technicians
- Scheduled maintenance when it's convenient for you
- Inspection of all safety items: brakes and steering components, key lifting components, pedestrian awareness systems, operator restrain systems
- Increased performance and operating life
- Reduced overall maintenance cost
- Better trade-in value
- Operator satisfaction
- One source for parts and service
- Available for all makes and models



**The best way to deal with a problem is to prevent it! A customized Planned Maintenance Program pays for itself.**



## Brandt Manufacturer Certified Technicians

- Are trained by the manufacturer to understand every aspect of your machine.
- Are equipped with proper diagnostic tools to correctly identify problems, and help prevent machine failure.
- Will evaluate your machines and recommend repairs that need to be completed today, and which ones can wait.

**More than an oil change and a grease job. Your material handling equipment gets a complete inspection, every time.**

Contact your local Brandt dealer for details.

# Dock Planned Maintenance



Regular dock maintenance helps ensure a safe working environment by identifying small repairs before they become a safety concern or create long-term damage. Plus, you can keep out frigid temperatures and extreme heat to reduce your utility costs! Whether it's mechanical, electrical, or hydraulic, we've got you covered.

## Services Available:

- Dock leveler maintenance
- Vehicle restraint maintenance
- All additional repairs will be quoted with price on parts and labour for your approval before work is done


## Program Includes:

- Inspection
- Cleaning
- Lubrication
- Setting/adjustment
- A detailed report

Contact your local Brandt dealer for details.



# Brandt Protection Plan Program



Get a performance guarantee with warranties for used equipment.

## Our protection plan delivers performance you can rely on with:

- 12-month, 1,000-hour warranty on used rough terrain forklifts and telehandlers less than 8 years old with under 5,000 hours and all other equipment less than 8 years old and under 7,000 hours\*
- Select engine, transmission, axle, hydrostatic, and hydraulic system components covered\* for 12-months or 1,000 hours, whichever comes first
- Repairs under the Brandt protection plan are completed by trained and certified service technicians at your local Brandt branch
- \$0 deductible on equipment covered by the Brandt protection plan
- Maintenance record kept by Brandt, providing an easier way to track machine maintenance that qualifies under the protection plan
- Protect your investment and retain resale value, while removing unpredicted machine repair expenses from your books

Contact your local Brandt dealer for details.

# Operator Safety Training

We offer forklift, telehandler, excavator, mobile elevated work platform, fall protection, skid steer, crane & rigging, and front end loader training courses online, in-class, and on-site.

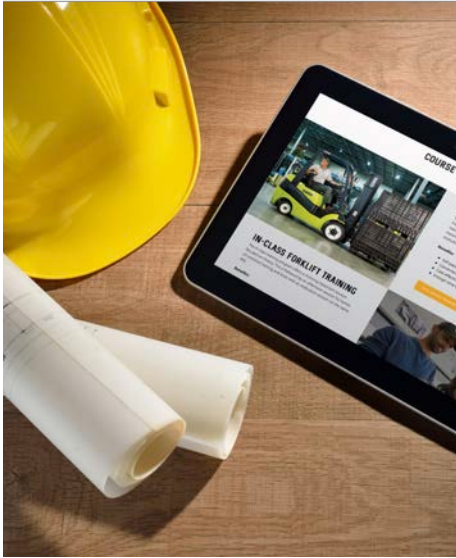
Brandt training programs provide students with the basic principles of material handling and construction equipment operation, load handling, maintenance, and safety. The course begins with a theory portion, followed by a half-day, hands-on

training session, and evaluation. Upon successful completion of the theory test and practical assessment, an Operator Equipment Safety Certification is provided to trainees.

Enhance your safety, productivity, efficiency, and confidence on the job with Brandt Safety Training. Our certification meets and exceeds safety standards across Canada with OH&S and CSA compliance.



# Training Solutions



## Online Training

Our online training courses consist of self-directed, web-based theory learning. Interactive online operator safety training courses are combined with in-person practical operator assessments, to ensure that individual operators comply with OH&S and CSA competency requirements.

The hands-on portion is a half-day training session focusing on complete understanding of workplace hazard assessment, equipment inspection, and a practical operator evaluation.

### Benefits:

- Convenient schedule
- Cost-effective approach
- Self-paced learning via computer/tablet/mobile device
- Enough time to gain solid equipment understanding

## In-Class Training

The in-class training program consists of a half-day classroom session focused on theory, which is followed by the hands-on practical operator assessment.

The classroom theory portion consists of OH&S and CSA legislation applicable to the specific equipment, safe operation principles of the equipment, main equipment components, and the manufacturer's safe operating procedures.

### Benefits:

- Recommended for less experienced operators
- Certified in a day with one-on-one practical coaching and assessment
- Industry-leading safety training instructions to support your trainees



## On-site Training

As a business solution, our certified trainings can train operators with specific equipment at your facility.

On-site training mirrors the in-class approach, with the convenience of bringing industry-leading safety training instructors right to your facility. This training program consists of a half-day classroom session focused on theory, followed by the hands-on training and assessments with your specific equipment.

### Benefits:

- Employees are trained on-site reducing your travel cost and time
- Multiple employees can be trained together in your work environment
- Employees get trained on the equipment they use on a daily basis



## Train the Trainer

Brandt's Train the Trainer courses include a complete package of training materials and The Train the Trainer instruction package includes presentation materials, adult learning best practices, recommended questions for discussion with your trainees, and theoretical exams with answer keys, along with pre-trip inspection and practical assessment templates.

Each Train the Trainer package is designed to provide a combined classroom and practical training time of six to eight hours.

### Benefits:

- Enhance training programs with qualified and professional content
- Save time on developing training programs with comprehensive training packages
- Provide your operators with more consistent, structured safety training
- Increase productivity and cost savings with in-house training
- On-going consulting support from Brandt's industry leading safety trainers
- Ability to purchase student manuals at discounted rates

## Why Train With Us?

### Practical Training

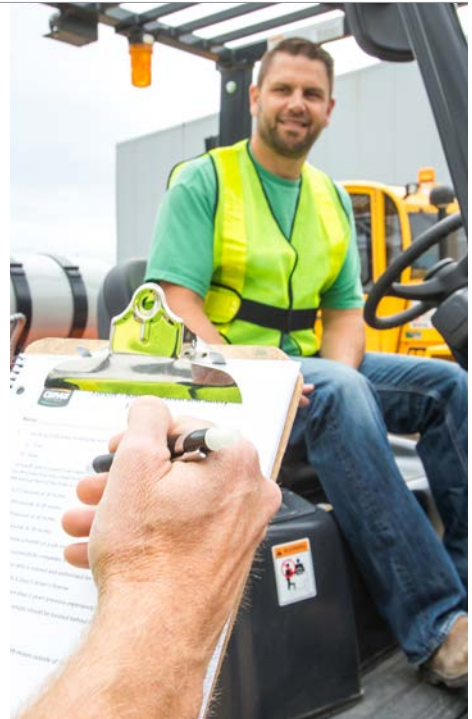
Our courses provide hands-on training to allow time for students to become familiar with the equipment controls, and demonstrate proper operating procedures. Hands-on training helps trainees develop necessary skills in pre-use inspections, start-up, safe operation, maneuverability, parking, re-fuelling, and shut-down.

### CSA & OHS Compliant

All Brandt courses are Occupational Health & Safety (OH&S) and Canadian Standards Association (CSA) compliant. By meeting safety standards nationwide, Brandt provides trainees with an understanding of safe operation at the federal, provincial, and individual company policy levels. The courses also provide a review of employer, supervisor, and employee health and safety responsibilities in the workplace.

### Certification

After successful completion of the theoretical exam and practical operator assessment, an industry recognized certification is provided to students. This complete training program provides students with the basic principles of equipment operation, load handling, operational maintenance and safety.



## Find our monthly training schedule.

Visit [more.brandt.ca/forklifts/training](https://more.brandt.ca/forklifts/training) for updated monthly schedule



# Operator Safety Courses

---



## Forklift (Sit-down Counterbalance/Narrow Aisle/Stand-up/Order Picker)

**Lift Truck Components:** Operating controls and their functions

**Machine Stability:** Center of gravity, lifting a load

**Data Plates and Warning Decals:** Calculating a safe load

**Safety Equipment:** Overhead guards, warning devices

**Safe Lift Truck Operation:** Load handling, traveling, operating in confined areas, equipment pre-use inspection, parking, and shut-down procedures

**Handling Fuels, Batteries, and Emergencies:** Refueling, correct battery charging procedures, changing LPG tanks

---

## Mobile Elevated Work Platform

**Safety Awareness:** Responsibilities, safety labels and decals, pre-use inspection, and data plate specifications

**Machine Controls:** Ground/platform controls, functions, function enable switch, and emergency stop procedures

**Function Tests:** Ground/platform controls, limit switches, and break tests

**Machine Operation:** Traveling, operating on slopes, indicator lights, start-up and shut-down procedures

**Contact training coordinator for MEWP/Fall Protection training bundle.**



## Telehandler

**Safety Awareness:** Pinch points, pedestrian awareness, mounting and dismounting, weather conditions, and emergency exit procedures

**Components:** Telescopic boom, ROPS and FOPS, switches, levers, boom, outrigger controls, and steering options

**Pre-use Inspection:** Wheels and tires, lighting, mirrors, wipers, engine compartment, and function test

**Operation:** Stability, use of boom and outriggers, capacity charts, frame leveling, load shifts, overhead power lines, start-up and shut-down procedures

---

## Skid Steer

**Equipment Features:** Rubber tires and track, steel track, control features and differences

**Safety and Pre-use Inspection:** Work area assessment, entanglement, pinch and crush points, mounting and dismounting

**Start-up, Controls and Testing:** Cold start procedures, warning indicators, and test control system

**Equipment Operation:** Joystick, levers and pedals, forward/reverse travel, turning functions, machine stability and capacity, shut-down, and refueling

**Filling the Bucket:** Know the site conditions, railway tracks and high-centering, traveling on a slope or ramp, digging, backfilling, and back dragging





## Front End Loader

**Understanding Safety Regulations:** Review federal, provincial, and company regulations as well as employer, superintendent, and employee responsibilities

**Types of Front End Loaders:** Rigid frame, articulating frame, and attachment options

**Component Functions:** Main controls and

gauges, hydraulic system, steering system, cylinder assemblies, front loader assembly, engine compartment, wheels and tires

**Operating Safely:** Stability, overloading, improper loading, maneuverability, slide slopes and grades, workplace hazard assessment, bucket filling and dumping, digging, leveling, and undercutting, start-up and shut-down procedures

## Excavator

**Understanding Safety Regulations:** Review federal, provincial, and company regulations as well as employer, superintendent, and employee responsibilities

**Types of Excavators:** Crawlers, and rubber tired

**Excavator Components and Functions:** Undercarriage, turret and cab, engine and hydraulic system, attachments, work assembly, and counterweight

**Operating Safely:** Stability and capacities, pre-use inspection, workplace hazard assessment, ground disturbance awareness, and securing the working area

**Operating Procedures:** Machine set-up on-site, hydraulic controls function test, trench protective systems, proper lifting procedures, undercutting, trenching, excavating, parking, refueling, and transport



## Crane and Rigging – Overhead / Truck Mount

**Understanding Safety Regulations:** Review federal, provincial, and company regulations as well as employer, superintendent, and employee responsibilities

**Types of Cranes:** Straight boom, articulating boom, truck mounted, and overhead bridge crane

**Operating Procedures:** Tag line use, shock loading and handling effects, and hand signals

**Components and Functions:** Boom, mast, controller, trolley, hoist, visual inspection, sling configuration, and working load limits

**Operating Safely:** Pre-operating inspection, hydraulic safety, hazard identification, work zone safety and setting up, leveling and soil stability

**Slings and Riggings:** Inspections, rigging methods, and sling angles

## Fall Protection

**Understanding Safety Regulations:** Review federal, provincial, and company regulations as well as employer, superintendent, and employee responsibilities

**Fall Protection Systems:** Fall arrest systems, fall protection planning and systems, travel restraint systems, fall prevention techniques and systems, fall hazards, and ladder safety

**Major Types of Fall Hazards:** Unprotected roof edges, improper scaffold construction, unsafe portable ladders, and working near electricity

**Fall Protection Systems:** Control and safe zones, anchorage (temporary and permanent), body harness fitments and donning, connected devices, shock absorbing lanyard, self-retracting lanyard, lifelines (horizontal and vertical), rescue plan, equipment inspection, care and maintenance



---

# Customer Service Advisors



## Why Work with a CSA?

Brandt Customer Service Advisors, or CSAs, act as a liaison to provide you with product and services information, answer questions, and resolve any problems that you may face accurately and efficiently. Our CSAs act as a single point of contact for your business, and are valuable partners who can suggest products, and help find solutions to the pain points within your company.

CSAs are factory-trained and have developed on-the-job skills and knowledge that can help improve your ROI. Their

goal is to provide excellent customer satisfaction through high customer service standards, valuable insights, and product knowledge.

Our Customer Service Advisors are available to speak one-on-one with you on the phone, via email, on in-person at your location.

**Contact your local Brandt dealer for details.**

# Rental Solutions



As a leading material handling dealer in Western Canada, Brandt has a full selection of material handling equipment and attachments ready to rent. With just one call or click, we'll have your rental equipment ready when and where you need it.

Whether you need an extra machine for a busy season, or a replacement while yours is in the shop, Brandt has got you covered. We offer short and long-term rentals at competitive rates. All of our rentals are regularly serviced by factory-trained technicians to ensure your equipment rental gets the job done safely and efficiently.

## Why Rent?

- No capital investment
- An affordable alternative to purchasing
- Eliminates maintenance costs
- Replacements for when your equipment is down and you've got a job to finish
- Get the right equipment for short or long-term projects
- Late model equipment
- Brand names synonymous with quality
- Safe, reliable, and durable machines
- Factory recommended maintenance intervals completed
- All maintenance due to normal wear and tear is covered by Brandt
- Field service technicians available for support
- Limited rental damage waiver available



# Rental Equipment

## Cushion Tire Forklifts

Cushion tire forklifts are suited for applications in manufacturing, warehousing, and distribution. They provide maximum operator comfort and low noise levels to meet the most demanding operations.



**CLARK**  
3,000 – 15,000 lbs



**BOBCAT**  
3,000 – 12,000 lbs

## Rough Terrain Forklifts

The Sellick S Series is optimized for rough terrain work environments.



**SELICK**  
6,000 – 16,000 lbs

## Telehandlers

Telehandlers can handle any challenge, so you can pick and place with ease.



**JLG**  
6,000 – 12,000 lbs

## Pneumatic Tire Forklifts

Pneumatic tire trucks are suited to diverse manufacturing, warehousing, and distribution applications. They provide high levels of operator comfort, ease of service, and low noise.



**CLARK**  
3,500 – 18,000 lbs



**BOBCAT**  
3,500 – 55,000 lbs

## Attachments

Get the most out of your forklift with the right attachments such as fork extensions, carpet poles, propane tanks, and more.



## Aerial Work Platforms

JLG provides a wide selection of engine-powered, electric, hybrid, and towable aerial work platforms, lifts, stock pilers, and more.



## Electric Forklifts

Electric forklifts are designed to meet the increasing performance and reliability demands of narrow aisle applications. They provide high value with easy operation, and strong and reliable component systems.



**CLARK**  
2,500 – 15,400 lbs



**BOBCAT**  
2,500 – 10,000 lbs

# 20% OFF ALL RENTALS

### With Equipment Servicing

Get **20% OFF** any rental while your equipment is being serviced in our shop or your yard.



# Product Lineup



## Cushion Tire Forklifts



**C15C/18C/20SC**  
3,000 - 4,000 lbs



**S20/25/30/32C**  
4,000 - 6,500 lbs



**CGC 40/50/55**  
8,000 - 12,000 lbs



**CGC 60/70**  
13,500 - 15,000 lbs

## Pneumatic Forklifts



**C15/18/20S**  
3,000 - 4,000 lbs



**S20/25/30/35**  
4,000 - 7,000 lbs



**GTS20/25/30/33**  
4,000 - 6,600 LB lbs



**C40/45/50S/55S**  
8,000 - 11,000 lbs



**C60/70/75/80**  
13,500 - 18,000 lbs

## Electric Forklifts



**TMX 12/15S/15/17/20/25**  
2,500 - 5,000 lbs



**ECX 20/25/30/32**  
4,000 - 6,500 lbs



**GEX 20/25/30/32**  
4,000 - 6,500 lbs



**GEX 40/45/50**  
8,000 - 10,000 lbs



**CTX 40/70**  
8,800 - 15,400 lbs

## Narrow Aisle Forklifts



**NPX15D/17/20/22**  
3,000 - 4,500 lbs



**OSX15**  
3,000 Lb



**OSQ**  
2,268 - 3,160 lbs



**ESX 12/15S/15/17/20/22/25**  
2,500 - 5,000 lbs

## Hand Pallet Jacks



**CJ44W**  
4,400 lbs



**CJ55**  
5,500 Lb



**CJ55**  
5,500 Lb

## Electric Pallet Jacks



**WPL25**  
2,500 lbs



**WP30**  
3,000 lbs



**WPL40**  
4,000 lbs



**WPX45**  
4,500 lbs



**PWX 30/40, HWX 30/40**  
6,000 - 8,000 lbs



**SSX12/16/18**  
2,500/3,500/4,000 lbs



**WS22M**  
2,200 lbs



**WSTX22**  
2,200 lbs



**WSTX33**  
3,300 lbs



**WRSX30**  
3,000 lbs

## Cushion Tire Forklifts



**GC15/18/20SC-9LP**  
3,000 - 4,000 lbs



**GC20/25/30/33S-9LP**  
5,000 - 6,500 lbs



**GC35/45/55C-9 BCS**  
8,000 - 12,000 lbs

## Pneumatic Forklifts



**G15/18S-5, 20SC-5**  
3,000 - 4,000 lbs



**G20/25/30/33N-7, G35NC-7**  
5,000 - 7,000 lbs



**G/D 35/40/45S-5/-7, 50/55C-5/-7**  
8,000 - 12,000 lbs



**D60/70/80/90S-7, G60/70S-7**  
13,500 - 20,000 lbs



**D100/120/140/160S-7**  
22,000 - 36,000 lbs



**DV180S/250S-7**  
40,000 - 55,000 lbs

## Electric Forklifts



**B20S/25S/30S/32S**  
2,000 - 3,200 lbs



**B15/18/20T-7, B16/18/20X-7**  
3,000 - 4,000 lbs



**BC15/18S-5/20SC-5**  
3,000 - 4,000 lbs



**B22/25/30/35X-7**  
4,500 - 7,000 lbs



**BC20/25/30/32S-7, B25SE-7**  
4,000 - 6,500 lbs



**B40/45/50X-5**  
8,000 - 10,000 lbs



**B15/18/20SU-9**  
3,000 - 4,000 lbs

## Narrow Aisle Forklifts



**BR18SP/BR20SP-7**  
3,500 - 4,000 lbs



**BOP155-9**  
3,000 lbs



**B155SU-9/B185SU-9/B205SU-9**  
3,000 - 4,000 lbs

## Electric Pallet Jacks



**BW-7 Series Power Workers**  
3,300 - 6,500 lbs



## Rough Terrain Forklifts



**SLP Series**  
5,000 - 8,000 lbs



**STM Series**  
5,500 - 7,000 lbs



**TLT Series**  
6,000 - 7,000 lbs



**S Series**  
6,000 - 12,000 lbs



**STT80**  
13,000 lbs



**S150**  
15,000 lbs



**S162**  
16,000 lbs

## Articulating Boom Lifts



**340AJ**  
33 ft, 10 in



**450AJ**  
45 ft



**600 Series**  
60 ft, 5 in - 60 ft, 7 in



**740AJ**  
74 ft



**800 Series**  
80 ft



**1250AJP**  
125 ft



**1500AJP**  
150 ft

## Telescopic Boom Lifts



**400 Series**  
40 ft - 46 ft



**600 Crawler Series**  
60 ft, 3 in - 66 ft, 8 in



**600 Series**  
60 ft, 3 in - 66 ft, 8 in



**800 Series**  
80 ft - 86 ft



**Ultra Series**  
120 ft - 185 ft, 7 in

## Electric & Hybrid Boom Lifts



**Compact Crawler Booms**  
43 ft, 6 in - 77 ft, 5 in



**Articulating Boom Lifts**  
29 ft, 5 in - 51 ft, 10 in



**Telescopic Boom Lifts**  
60 ft, 3 in - 60 ft, 4 in



**Toucan Mast Boom Lifts**  
20 ft, 2 in - 32 ft, 3 in

## Telehandlers



**G5-18A**  
5,512 lbs



**742**  
7,000 lbs



**AG925**  
8,800 lbs



**943**  
9,000 lbs



**1043**  
10,000 lbs



**1055**  
10,000 lbs



**1255**  
12,000 lbs



**1644/1732/2733**  
**Hi-Capacity Models**  
15,650 lbs – 26,600 lbs

## Driveable Vertical Mast Lifts



**1230ES**  
12 ft



**15MVL**  
15 ft, 4 in



**20MVL**  
19 ft, 1 in

## Push Around Vertical Mast Lifts



**19AMI**  
19 ft, 4 in



**20AM**  
20 ft, 5 in



**25AM**  
25 ft, 2 in



**30AM**  
29 ft, 10 in



**36AM**  
36 ft, 3 in



**41AM**  
40 ft, 9 in

## Driveable Stock Pickers



**10MSP**  
10 ft



**15MSP**  
15 ft, 3 in



**20MSP**  
19 ft, 5 in

## Push Around Stock Pickers



**12SP**  
11 ft, 9 in



**15SP**  
15 ft, 2 in



## Electric Scissor Lifts



**R Series**  
15 ft - 39 ft, 3 in



**ES Series**  
18 ft, 9 in - 31 ft, 9 in



**LE Series**  
33 ft - 40 ft

## Engine Powered Scissor Lifts



**260MRT**  
26 ft



**330LRT**  
33 ft



**430LRT**  
43 ft



**530LRT**  
53 ft

## Towable Boom Lifts



**T350**  
34 ft, 5 in



**T500J**  
50 ft

## Push Around Mast Lifts



**830P**  
8 ft, 2 in

## Non-powered Ecolifts



**Ecolift 50**  
4 ft, 11 in



**Ecolift 70**  
7 ft, 3 in

## LiftPod Personal Portable Lifts



**FT70**  
7 ft



**FT140**  
13 ft, 6 in

Telehandlers



**3013**  
2,700 lbs



**6036**  
6,000 lbs



**6042**  
6,000 lbs



**8042**  
8,000 lbs



**10042**  
10,000 lbs



**10054**  
10,000 lbs



Stand-on & Ride-on Scrubber Dryers



**SC750 28R Ecoflex W242 OBC**  
Walk Behind Floor Scrubber



**Avenger X2805R 420 SC**  
Ride on Scrubber

Floor Sweepers



**SW5500 46B 366 AH**  
Ride on Sweeper



**Sweeper Terra 28B**  
Walk Behind Floor Sweeper



**SW900 180 AH G**  
Walk Behind Floor Sweeper

# Attachments

## Man Baskets

Forklift man baskets are designed for the safety of your personnel and meet all OH&S requirements. Fitted to the forks of your forklift truck, our range of forklift man baskets offer a strong and safe working deck.



## Lift N Tow

Convert your fork truck into a tow truck for moving trailers and other portable equipment using this attachment. The Lift N Tow features a rugged, durable, and simple design to easily slide and secure the attachment on the forks.



## Magnetic Sweepers

Magnetic sweepers are ideal for cleaning industrial settings, parking lots, and loading areas. The design is durable, yet lightweight, for easy maneuverability and portability from work area to work area.



## Jib Boom

Designed to fit a range of material handling equipment, our industrial forklift jibs easily slip onto the forks of any make or model. These manually adjustable jibs are extendable, allowing you to reach over or under obstacles to place heavy loads



## Lift Tow & Hook

Forklift lifting hooks help lift, load, unload, and transport heavy items on the loading dock, in the warehouse, and more. Convert your fork into a hook with an anchor in a matter of seconds with easy to attach hoisting hooks.



# Warehouse Equipment

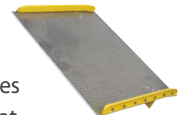
## Lift Tables

Lift tables provide you with vertical lifting and work positioning capabilities that will reduce the likelihood of workplace injuries. Lift tables are useful for work positioning and assembly, machine feeding, pallet loading and unloading, and manual load transportation.



## Dock Plates

Dock plates safely bridge the gap between your dock and the transport vehicle. Dock plates feature slip-resistant safety tread, bevelled edges, a bend at the upper end permits to ensure both ends lie flat, and tensile aluminum alloy construction.



## Pallet Jacks

Durable, versatile, and easy to use, pallet jacks feature an ergonomic design that reduces operator fatigue and downtime. The jacks are made with a rugged, heavy-duty frame, and the 200° handle pivot provides exceptional maneuverability in extremely compact areas.



## Stackers

Choose from a wide selection of the industry's most rugged, durable, and versatile stackers. Our extensive line of stackers includes fully powered walkies, manual drive with powered lift, and manual drive/lift units. All models are available in fork over, straddle, and counterweight styles with a variety of options and accessories.



## Hoppers

Self-dumping steel forklift hoppers allow ergonomic waste handling. Hoppers are made of steel for strength and durability, and are balanced to tilt forward when full, empty contents, and automatically return to the upright, locked position for reloading.



# Accessories

## Forks

**Stainless Steel Clad Forks**  
For use in highly sanitary applications such as the food and beverage industry.



**Spark Retardant Forks**  
For hazardous locations and atmospheres.



**Gypsum Forks**  
Provides optimum product protection when handling gypsum wallboard.



**Folding Forks**  
Enables lift trucks to maneuver in areas where movement is restricted (ie: elevators).



**Inverted Forks**  
To suit all pin type carriages.



**Fork Extensions**  
Used to extend the length of the fork blade when handling longer loads.



**Drum Forks**  
Fast material handling of barrels and drums.



**Lumber & Plywood Forks**  
Forged heel, single taper, double taper, with or without peek-a-boo backs.



**Block Forks**  
Allows secure handling of bricks and blocks.



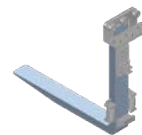
**Coil Forks**  
Blade is contoured to handle coils. Capacity is reduced according to the size of the contour.



**Quick Detach (QD) Forks**  
Designed to be easily and quickly removed from the lift truck carriage.



**Roller Forks**  
The rollers (bearings) allow the forks to move smoothly and effortlessly, initiating less wear and stress on hydraulic system.



## Batteries

We have the batteries and chargers that you need. Available for all makes and models of industrial lift trucks, our batteries are manufactured to exact standards to deliver the longest running times and battery life.



## Battery Chargers

Brandt has a full line of chargers for all voltages of batteries. Chargers range from a portable single phase 110/120 volt AC (plug-in) to a 480 volt AC three phase model. Each charger is energy efficient.



## Forklift Weigh Scales

Forklift weigh scales are fully automatic microprocessor electronic systems that measure the load weight on any type of vehicle, no matter the make, model, voltage, or lifting capacity.



## Battery Watering Kits

With single-point watering, our battery kits consist of automatic shut-off valves, interconnected with tubing, which replace existing vent caps.



---

## Connectors

Each connector has high dielectric and physical strength, offers low electrical resistance, superior conductivity, and minimizes vibration arching.



---

## LED Lights

LED lights are more energy efficient, have lower operating temperatures, and a longer service life than traditional lights. They also display a distinct pattern on the ground.



---

## Battery Stands

Battery stands safely roll the batteries in and out of electric forklifts and store them. Easily transport your batteries with the highest quality, safety, and control.



---

## Chains

Available for all makes and models. Leaf chains are made especially for applications requiring flexible, high strength tension linkages for reciprocating motion devices.



---

## Filters & Fluid

Service your equipment with the manufactured recommended filters/fluids to enhance your equipment life by reducing downtime and increasing productivity.



---

## Rain Guards

Overhead and full enclosure rain guards available. Rain guards are a practical and economical way to protect forklift operators from rain or sun.



---

## Aluminum Cylinder Tanks

Lightweight aluminum tanks are easier to transport and replace, while still meeting industry regulations and quality.



---

## Steel Cylinder Tanks

Rugged tanks with all-steel construction ensure each propane tank and cylinder meets or exceeds industry regulations for quality.



---

## Pneumatic Forklift Tires

Pneumatic tires provide a strong grip on uneven surfaces and rough terrain. Two types are available: solid rubber and air pneumatics.



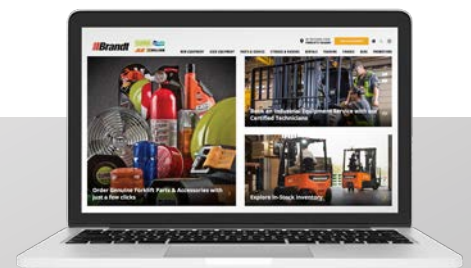
---

## Cushion Forklift Tires

Cushion tires are made of smooth, solid rubber and are fitted around a metal band. They are best for smooth surface applications, and help with handling in smaller spaces.



Call your local Customer Service Representative for current pricing. See more options on our website at [more.brandt.ca/forklifts](https://www.more.brandt.ca/forklifts)



# Safety

---

## Strobe Lights

Strobe lights generally provide a brighter, more intense flash than either flashing or revolving lights. They are often used in outdoor applications to signal other operators and pedestrians of an approaching truck.



## Seats

Forklift seats are crucial for forklift driver comfort, productivity, and safety. Choose from a wide selection of forklift seats with adjustment capabilities to provide excellent visibility on the job, and adjustable backrests for maximum comfort.



## Seatbelts

Wearing a seatbelt when operating a forklift is the most important safety feature that operators can take. Seatbelts save lives and protect against injury every day. We offer retractable, static, and coloured seat belts for all forklift makes and models.



## Blue Safety Lights

Blue safety lights project a light pattern onto the ground, providing visual warning for pedestrians, and preventing in blind corners, crossing, loud, and busy environments. Rugged solid state and long-lasting LEDs can withstand shock and vibration.



## Backup Alarms

If the operator's view is restricted, an audible alarm warns pedestrians that the truck is moving in reverse, forward, or both directions. Fixed-decibel alarms may be used in light to medium noise level environments. Variable-decibel alarms automatically adjust their volume to accommodate the surrounding noise level.



## Safety Decals

Safety and warning labels remind operators and workers of proper forklift rules and procedures to be followed to enhance workplace safety and reduce injuries. OH&S requires that labels be kept up-to-date and in good, legible condition. If labels are damaged or missing, replace them with new labels.



## Fire Extinguisher

Fire extinguishers can be mounted on the lift truck. We offer fire extinguishers for paper, wood, and trash fires, as well as for flammable liquid and electrical fires to meet most commercial and industrial environment needs.



## Mirrors

Mirrors can give the operator an improved view of the area surrounding the lift truck when normal operating vision is obstructed. Mirrors help eliminate dangerous blind spots when driving forklifts, are adjustable to any angle, and easy to install.



## Harnesses

Forklift safety harnesses provide maximum comfort and mobility while conforming to the shape of the user. Their high-strength design ensures forklift operator safety while working from heights.



# Storage Solutions

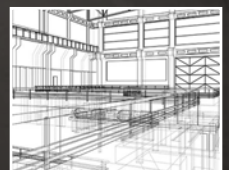
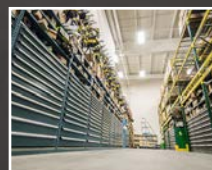
## Commercial and industrial-grade storage solutions backed by a network of unparalleled support.

Brandt Material Handling now offers a wide selection of storage and racking solutions from top manufacturers, complementing current industrial products, and services to better support your business. Our team of experts are here to make it easy and convenient from design to installation, so you can spend more time delivering on your commitments.

### Custom Warehouse Solutions

- Pallet racking
- Warehouse supplies
- Drawers & cabinets
- Protection products
- Shelving
- Engineering & design
- Dock products
- Mezzanines
- Racking protection
- Portable offices

Contact your local Brandt dealer for details.



For more information:

Call us at **1-306-791-7777**

Or visit us at **[more.brandt.ca/forklifts](https://www.more.brandt.ca/forklifts)**

Box 3856, Hwy #1 East  
Regina, SK, Canada  
S4P 3R8

The Brandt Group of Companies — headquartered in Regina, Saskatchewan, Canada — is a privately owned manufacturing and distribution company that serves a growing international audience in industries such as agriculture, construction, forestry, rail, mining, steel, transportation, material handling, and energy. The company has 5400+ employees and more than 170 locations in Canada, USA, Australia, and New Zealand. Brandt is one of Canada's largest privately owned companies and is among an elite group of Platinum Club members of Canada's Best Managed Companies.

© Brandt Industries Canada Ltd. and Brandt Industries USA Ltd. All rights reserved.

Brandt and Brandt logo are trademarks of Brandt Industries Canada Ltd. and Brandt Industries USA Ltd., under license.

All product information and specifications are subject to change without notification. Printed in Canada. Revised 01/2024

Powerful Value. **Delivered.**

The Brandt logo features three vertical red bars of varying heights on the left, followed by the word "Brandt" in a bold, white, italicized sans-serif font.